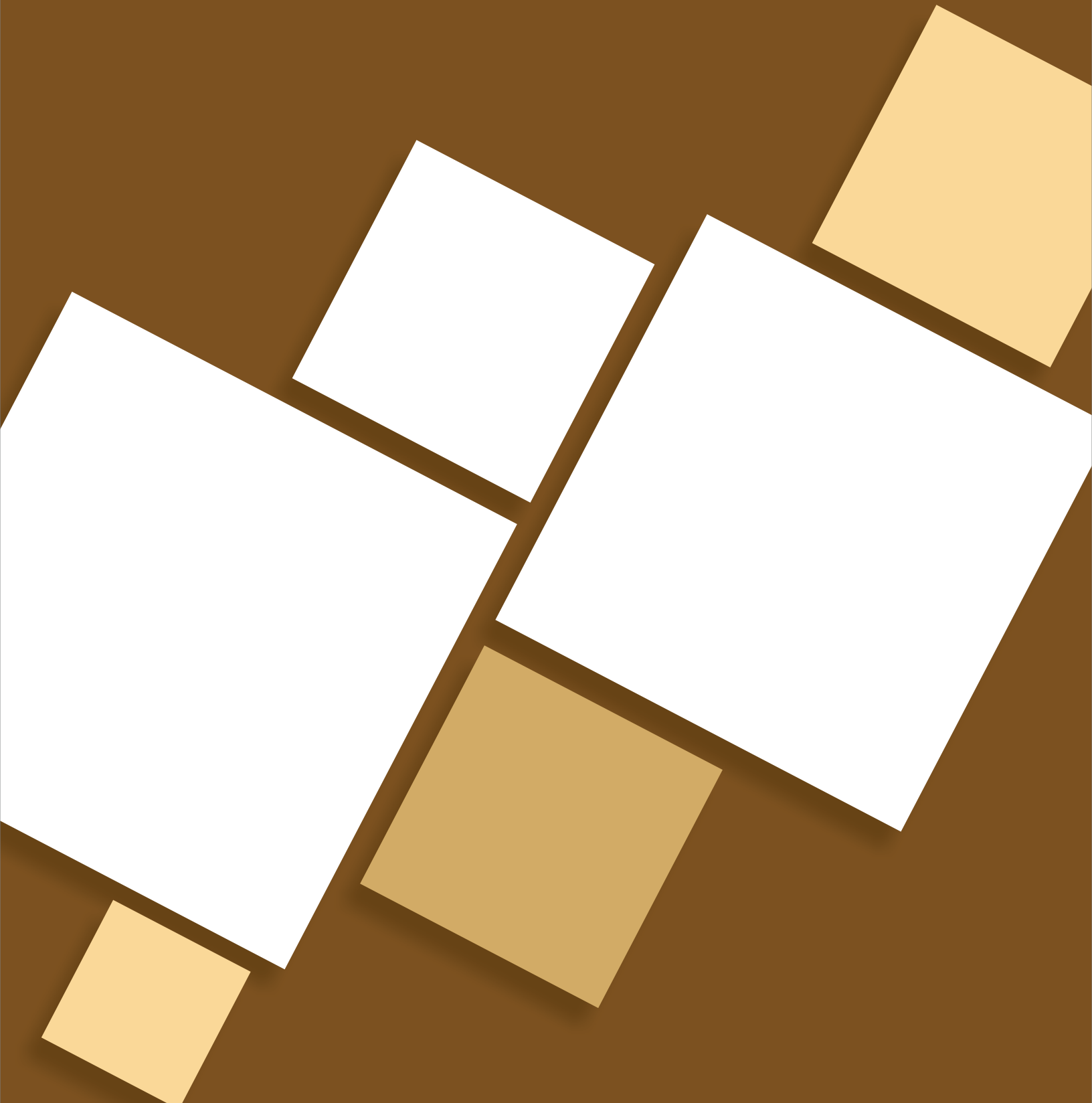


**Dhyey**  
INDUSTRIES



## ■ Earthing & Grounding Systems

## ■ Overhead Connectors - Hot Line Clamps



- Live line tool compatible
- Choose bronze alloy or aluminum alloy castings
- Easy installation
- Extended jaw for improved connection
- Corrosion resistant

## ■ Center Bolt Parallel Groove Hot Tap Clamps



- Wide temperature range lubricant prevents seizing of protected threads
- Tap wire positively secured to clamp during installation and removal by hex head bolt and pressure pad
- Main and tap clamped securely as clamp is tightened
- Copper clamps for use on copper conductors only

## ■ Earthing & Grounding Systems

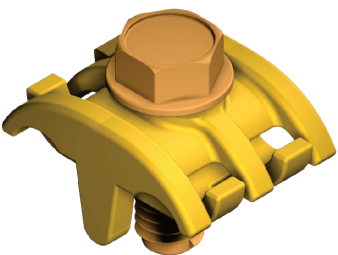
### ■ Aluminum Parallel Groove Clamps



#### ONE- AND TWO-BOLT ALUMINUM PARALLEL GROOVE CLAMPS

- Cast of high-strength copper alloy & aluminum alloy
- Copper inserts always face each other
- Order prefilled with oxide inhibitor for use on copper to aluminum
- Clamps are high-strength, heat-treated cast aluminum alloy
- Galvanized-steel carriage bolt, nut and lockwasher standard
- Extruded aluminum alloy, furnished with hex head bolt

### ■ Jumper Clamps

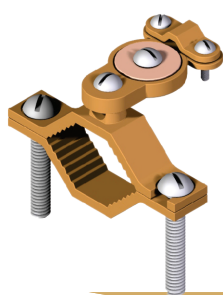


#### ONE SIZE FITS ALL REQUIREMENTS FROM #8 SOLID COPPER TO 1/0 ACSR OR 2/0 COPPER.

- Cast of high-strength copper alloy
- Furnished with silicon bronze hex washer head bolt
- Parallel groove design — no need to remove bolt for installation
- Available plated, unplated or with plating in one groove

## ■ Earthing & Grounding Systems

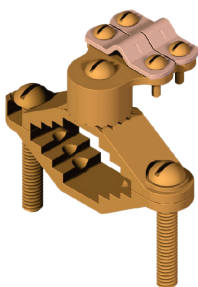
### ■ Grounding Clamps



- Cast of high-strength copper alloy
- Conduit size ½ or ¾ EMT and ½ rigid
- Hub 360\* Swings

WATER PIPE SIZE	CONDUCTOR RANGE
½ to 1"	6 sol.
1¼ to 2"	6 sol.
2½ to 4"	6 sol.
4½ to 6"	6 sol.

### ■ Grounding Clamps



- Cast of high-strength copper alloy
- Matching serrations assure positive lock of adaptor to clamp
- For Bonding bar or Armored Copper wire

WATER PIPE SIZE	GROUND WIRE	ADAPTOR
½ to 1"	2 str.	4/0 str.
1¼ to 2"	2 str.	4/0 str.
2½ to 4"	2 str.	4/0 str.
4½ to 6"	2 str.	4/0 str.

## ■ Earthing & Grounding Systems

### ■ Grounding Clamps

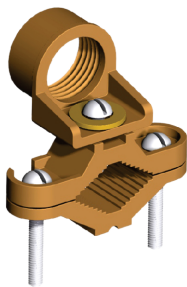


- Cast of high-strength copper alloy

WATER PIPE SIZE	GROUND WIRE
½ to 1"	#2 str.
1¼ to 2"	#2 str.
2½ to 4"	#2 str.
4¼ to 6"	#2 str.

CONDUIT HUB SIZE	GROUND WIRE
½	2/0 str.
¾	3/0 str.
1"	3/0 str.

### ■ Grounding Clamps



- Cast of high-strength copper alloy

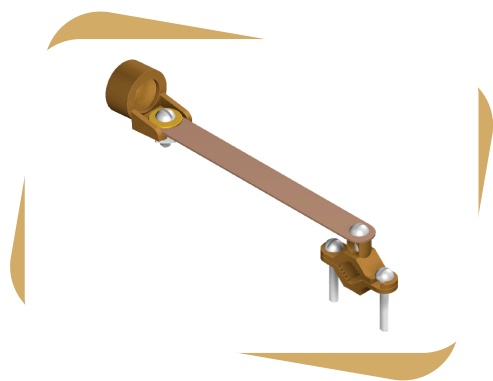
WATER PIPE SIZE	GROUND WIRE
½ to 1"	2 str.
1¼ to 2"	2 str.
2½ to 4"	2 str.
4¼ to 6"	2 str.

CONDUIT HUB SIZE	GROUND WIRE
½	4 str.
¾	4 str.
1"	4 str..



## ■ Earthing & Grounding Systems

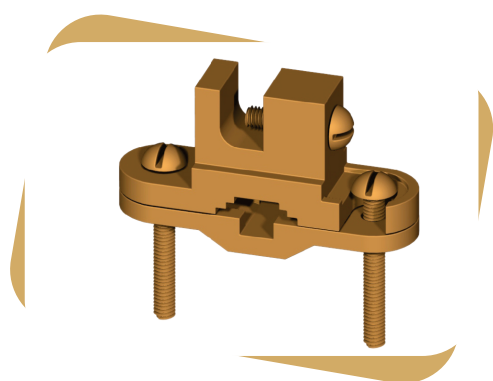
### ■ Grounding Clamps



- Cast of high-strength copper alloy
- Ground Clamp for conduit with copper strip
- Copper Strap helps protect conduit from water system vibration

WATER PIPE SIZE	CONDUIT HUB SIZE	GROUND WIRE
½ to 1"		
1¼ to 2"	½	6 sol.
2½ to 4"	¾	2/0 str.
4¼ to 6"	1"	3/0 str.

### ■ Grounding Clamps

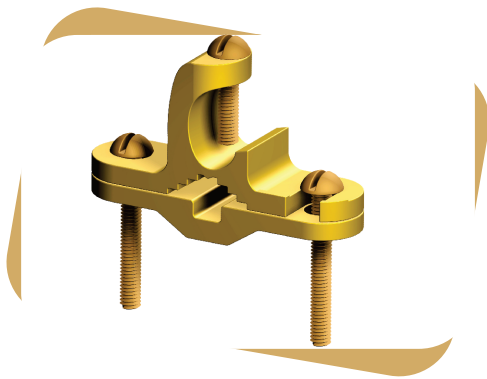


- Cast of high-strength copper alloy

WATER PIPE SIZE	REBAR SIZE	GROUND ROD SIZE	CONDUCTOR RANGE
½ to 1"	¾ to 1"	¼ to 1"	#10 sol. #2 str.

## ■ Earthing & Grounding Systems

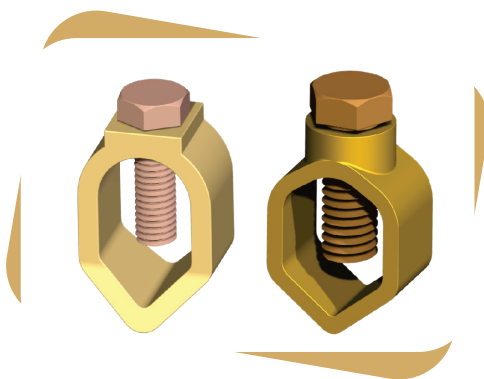
### ■ Grounding Clamps



- Cast of high-strength copper alloy

WATER PIPE SIZE	REBAR SIZE	GROUND ROD SIZE	CONDUCTOR RANGE
½ to 1"	¾ to 1"	½ to 1"	#10 sol. #2 str.

### ■ Ground Rod Clamps

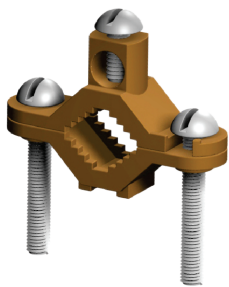


- Cast of high-strength copper alloy

NOMINAL ROD DIA.	
Inch	mm
⅜	9.5
½	12.7
⅝	15.8
¾	19.0

## ■ Earthing & Grounding Systems

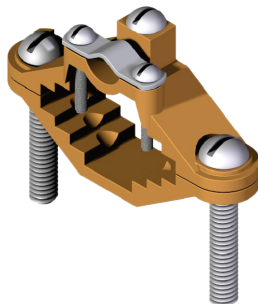
### ■ Grounding Clamps



- Cast of high-strength copper alloy

WATER PIPE SIZE	CONDUCTOR RANGE
½ to 1"	2 str.
1¼ to 2"	2 str.
2½ to 4"	2 str.
4¼ to 6"	2 str.

### ■ Grounding Clamps



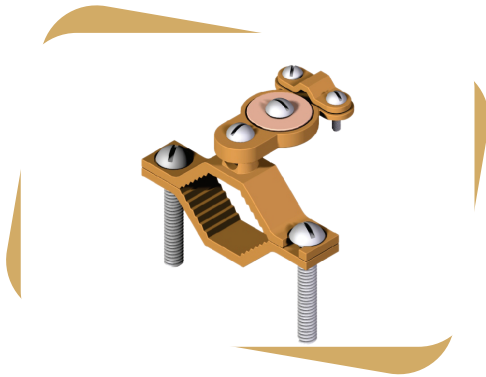
- Cast of high-strength copper alloy
- For bonding bar or armored copper wire

WATER PIPE SIZE	CONDUCTOR RANGE
½ to 1"	4 str.
1¼ to 2"	4 str.



## ■ Earthing & Grounding Systems

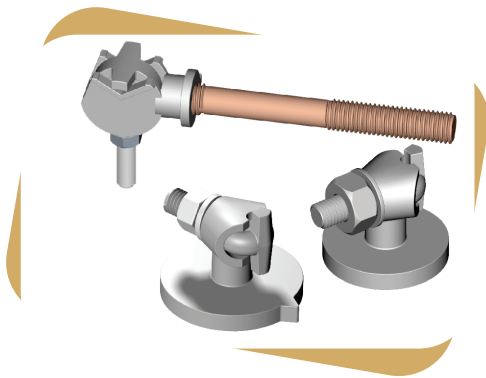
### ■ Grounding Clamps



- Cast of high-strength copper alloy
- For connecting armored cable or bonding bar to water pipe

WATER PIPE SIZE	CONDUCTOR RANGE
½ to 1"	6 sol.
1¼ to 2"	6 sol.
2½ to 4"	6 sol.
4¼ to 6"	6 sol.

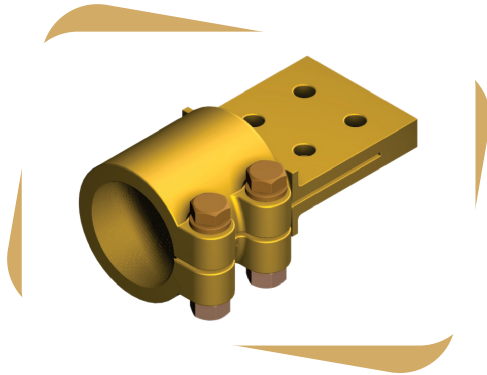
### ■ Bronze Terminal Caps (Eye Bolt)



- Cast of high-strength copper alloy
- Transformer Tank ground connector

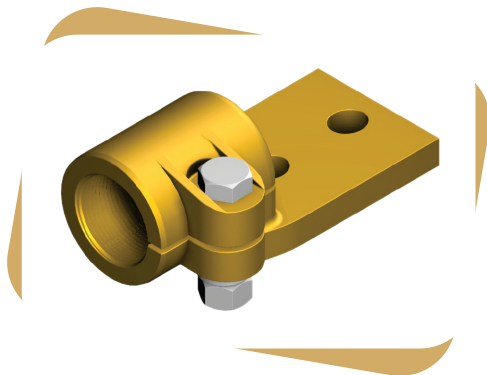
## ■ Earthing & Grounding Systems

### ■ Copper Alloy Stud Connector



- Cast of high-strength copper alloy
- Furnished with silicon bronze hex washer head bolt
- Stud to bar connector

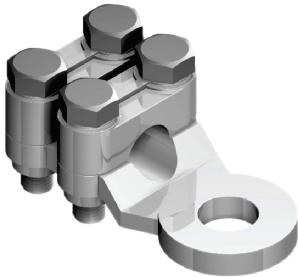
### ■ Copper Alloy Stud Bar Connector



- Cast of high-strength copper alloy
- Furnished with silicon bronze hex washer head bolt
- Stud to bar connector

## ■ Earthing & Grounding Systems

### ■ Re-Useable Welding Cable Lugs

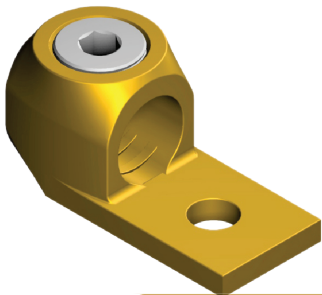


- Cast of high-strength copper alloy
- 2 or 4 Bronze Bolt
- All sizes furnished with reversible cable caps.



CABLE SIZE mm <sup>2</sup>	CABLE SIZE DIA. mm	TYPE	BOLT SIZE
16	5.1	2 Bolt	M-5
25	6.3	2 Bolt	M-5
35	7.5	2 Bolt	M-5
50	9.5	4 Bolt	M-6
75	11	4 Bolt	M-6
100	13	4 Bolt	M-6
120	14	4 Bolt	M-6
170	16	4 Bolt	M-8
200	17	4 Bolt	M-8
250	18	4 Bolt	M-8
300	21	4 Bolt	M-10

### ■ Copper Cable Lug



- Compact, economical, high copper alloy terminal for joining a wide range of cable to equipment pads or terminal blocks.

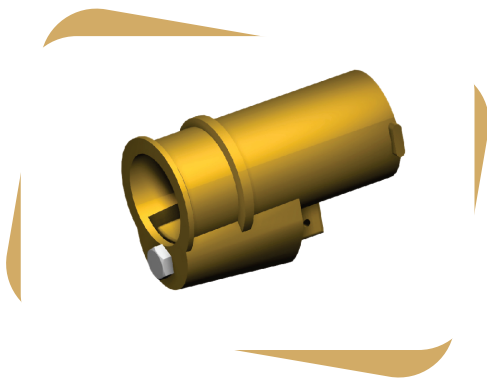
## ■ Earthing & Grounding Systems

### ■ Copper Alloy Stud Connector



- Cast of high-strength copper alloy
- Furnished with silicon bronze hex washer head bolt
- Substation Connector
- Stud to Bar Connector

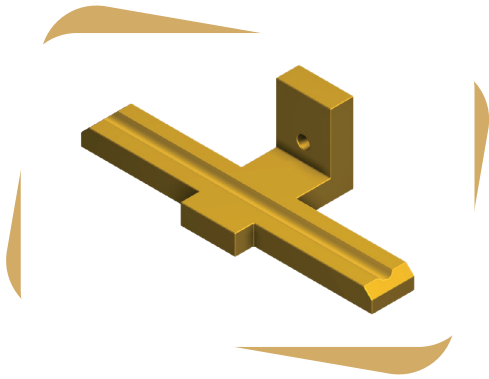
### ■ Electric Pole Line Hardware



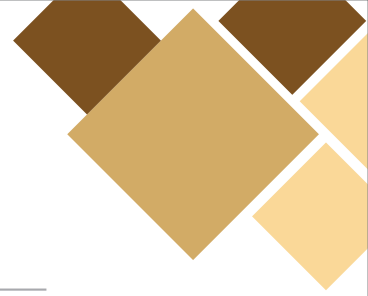
- Cast of high-strength copper alloy

■ **Earthing & Grounding Systems**

■ **Rod Bracket**

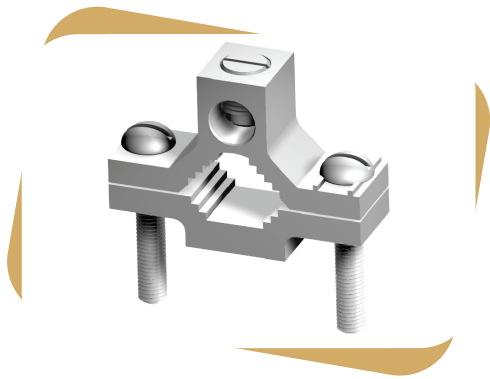


- Cast of high-strength copper alloy



## ■ Earthing & Grounding Systems

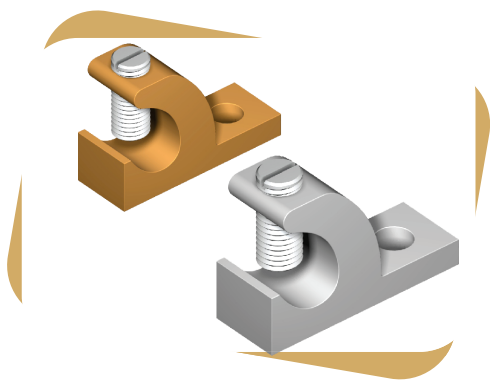
### ■ Grounding Clamps



- Extrusion Aluminum alloy

WATER PIPE SIZE	CONDUCTOR RANGE
½ to 1"	2 str.
1¼ to 2"	2 str.
2½ to 4"	2 str.
4¼ to 6"	2 str.

### ■ Lay - In Lug Connector

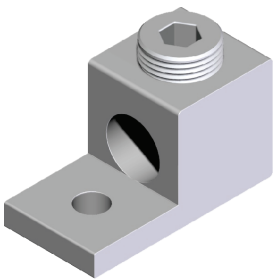


- Extrusion Aluminum & Copper alloy

CONDUCTOR RANGE
4 - 14 AWG

## ■ Earthing & Grounding Systems

### ■ Mechanical Connector

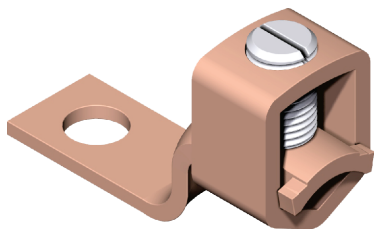


- Extrusion Aluminum alloy
- Available in Two, Three & Four-Hole Mount

CONDUCTOR RANGE
6 str
2 str
1/0 str
2/0 str

\*Also available in various size


### ■ Copper Mechanical Lug





- Cast of high-strength copper alloy

CONDUCTOR SIZE AWG	CONDUCTOR SIZE
14 - 10	25 mm <sup>2</sup>
14 - 6	35 mm <sup>2</sup>
14 - 4	70 mm <sup>2</sup>
2 - 1/0	125 mm <sup>2</sup>
4 - 3/0	175 mm <sup>2</sup>
2 - 4/0	225 mm <sup>2</sup>
1/0 - 350	300 mm <sup>2</sup>
1/0 - 500	400 mm <sup>2</sup>
600 - 1000	650 mm <sup>2</sup>



 Gokulnagar Main Road, Tirupati Industrial Area,  
Opp. Fortune Hotel, 150 Feet Ring Road,  
Rajkot - 360 004 (GUJARAT) INDIA.

 [info@dhyeyindustries.com](mailto:info@dhyeyindustries.com) | [dhyeyindustries@gmail.com](mailto:dhyeyindustries@gmail.com)  
 [www.dhyeyindustries.com](http://www.dhyeyindustries.com)