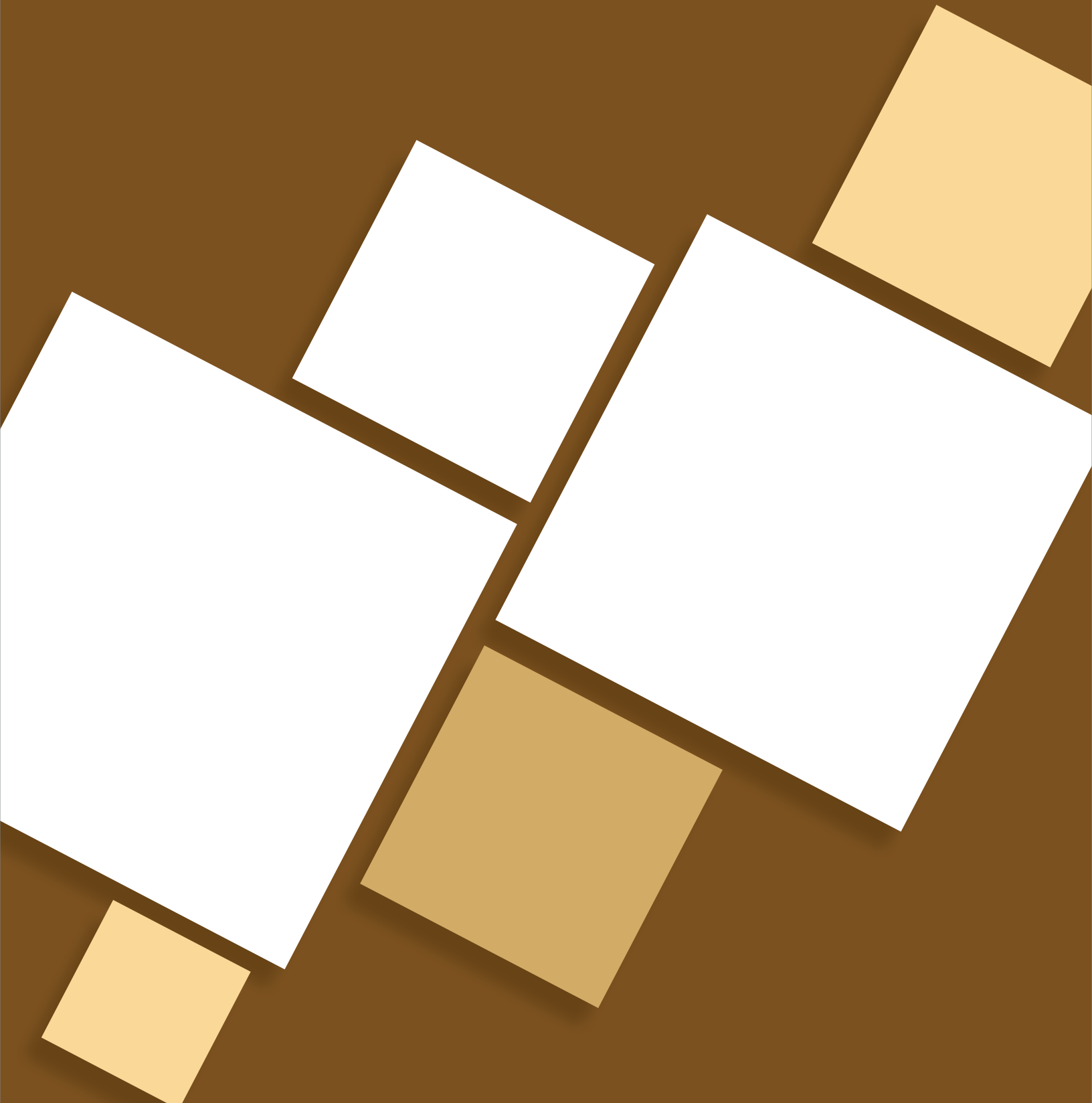
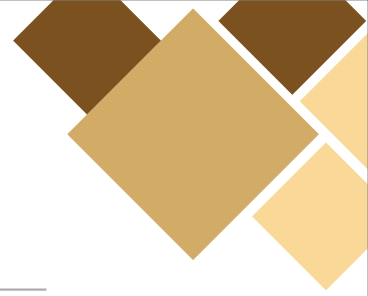


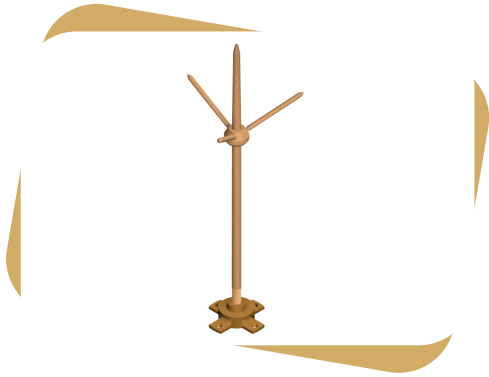
Dhyey
INDUSTRIES





■ LPS (Lighting & Protection System)

■ Taper Pointed Air Rod



- Multi-point air terminal are copper alloys, Suitable for Lightning protection systems.

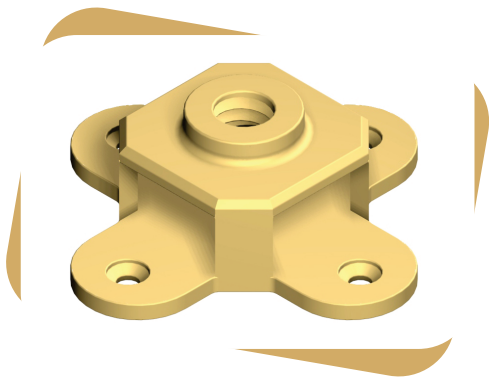
| Rod Diameter (mm) |
|----------------------|
| 5/8" |

- Taper Pointed Air Rod
Can be installed with or without multiple point as under

| Rod Length (mm) | Rod Dia (mm) | Thread Dia (mm) |
|--------------------|-----------------|--------------------|
| 500 | 15 | 16 |
| 1000 | 15 | 16 |
| 2000 | 15 | 16 |

Material : copper C-101

■ Air Terminal Base



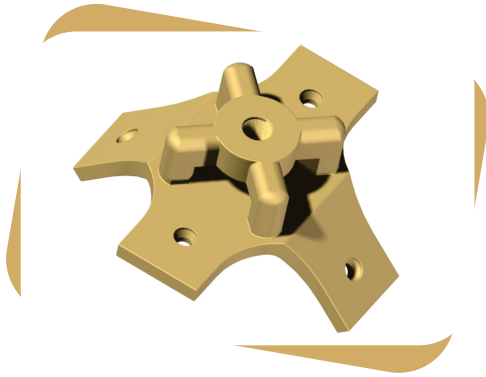
- Tape saddle are copper alloys or Aluminium suitable for use with an air rod fixes on to roof network of the lightning protection system connecting the tape to the air rod

| Thread Dia (mm) | Tape size (mm) |
|--------------------|-------------------|
| 5/8" | 25x3 |
| 3/4" | 25x6 |

Material : copper alloys, ASM C83600,BS EN 1982,LG-2

■ **LPS (Lighting & Protection System)**

■ **Ridge Shddle**

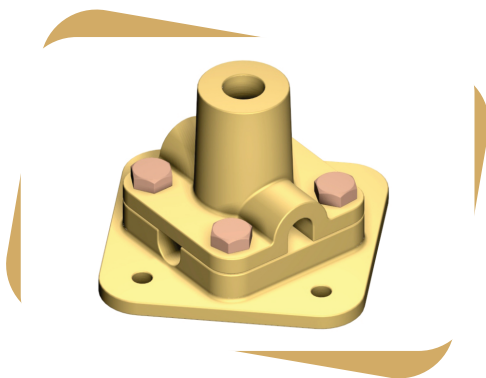


- Ridge saddle are copper alloys these ridge saddles fix on to the roof networking of the lightning protection system connecting the tapeto the air rod

| Thread Dia (mm) | Tape size (mm) |
|--------------------|-------------------|
| 5/8" | 31x3 |
| 3/4" | 31x6 |

Material : copper alloys, ASM C83600,BS EN 1982,LG-2

■ **Flat Saddle**

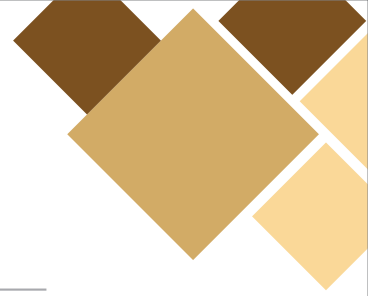


- Flat Saddle are copper alloy used with an air rod fixes, onto the roof or flat roof of building network of lightning protection system connecting the cable to the air rod.

| Cable-Wire | Thread Dia |
|--------------------|------------|
| 50 mm ² | 16mm |
| 70 mm ² | 16mm |
| 95 mm ² | 16mm |

Material : copper alloys, ASM C83600,BS EN 1982,LG-2

Bolt : Brass or Steel



■ LPS (Lighting & Protection System)

■ Plate Type Test Clamp

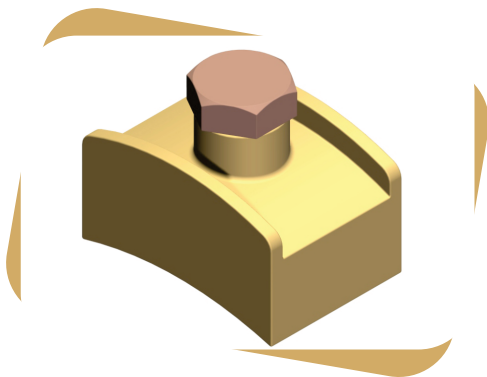


- Plate type test clamp are copper alloys
the fixes to tape to tape use for lightning protection system

| |
|------------------|
| Tape size |
| (mm) |
| 26x12 |

Material : copper alloys, ASM C83600,BS EN 1982,LG-2
Bolt : brass or steel

■ Watermain Pipe Bond



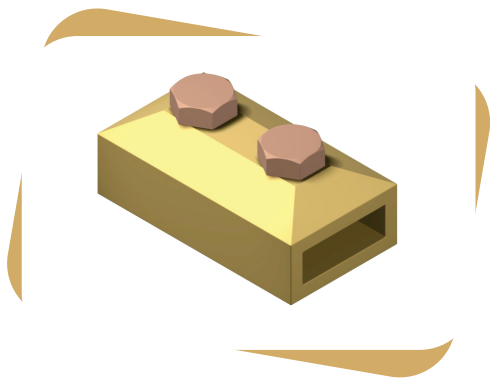
- Water main bond are copper alloys
these type of bonds are used for bonding copper tape -
to water main pipes into the earthing lightning protection system

| |
|------------------|
| Tape size |
| (mm) |
| 26x3 |

Material : copper alloys, ASM C83600,BS EN 1982,LG-2
Bolt : brass or steel

■ LPS (Lighting & Protection System)

■ Oblong Test Clamp / Junction Clamp

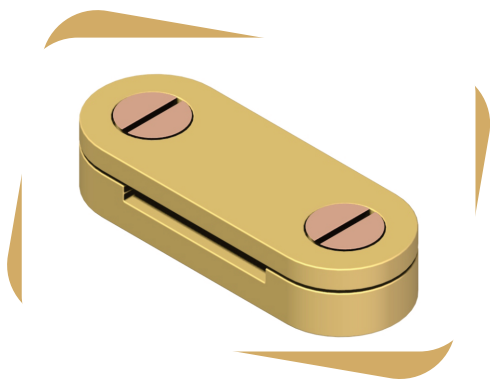


- Test clamp are copper alloys design for tape to tape jointing

| Tape size (mm) |
|-------------------|
| 26x8 |

Material : copper alloys, ASM C83600,BS EN 1982,LG-2
Bolt : brass or steel

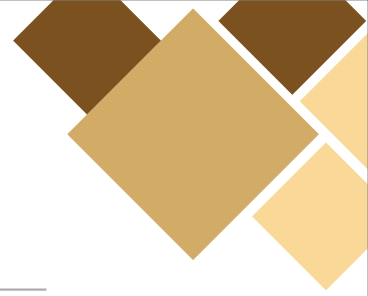
■ DC Tape Clip



- Dc tap clip are copper or Aluminium alloys for secures the tape conductor the tape fits into the support and is secured by tow screw

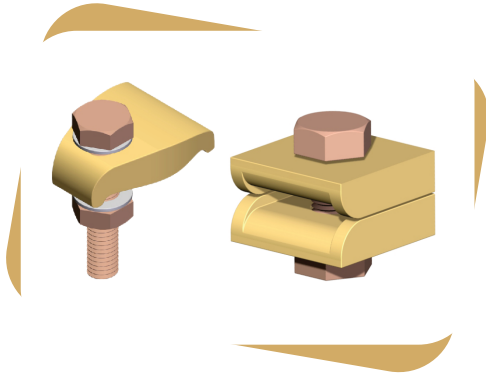
| Tape size (mm) |
|-------------------|
| 20x3 |
| 25x3 |
| 25x4 |
| 25x6 |
| 31x3 |
| 31x6 |
| 38x3 |
| 38x5 |
| 38x6 |
| 50x3 |
| 50x4 |
| 50x6 |

Material : copper alloys, ASM C83600,BS EN 1982,LG-2
Bolt : brass or steel



■ LPS (Lighting & Protection System)

■ B Bond / RWP Bond

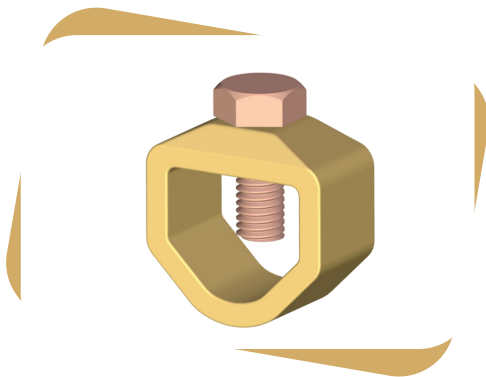


- Rwp bond are copper alloys used for bonding tapes to rainwater pipes

| |
|------------------|
| Tape size |
| (mm) |
| 26x3 |

Material : copper alloys, ASM C83600,BS EN 1982,LG-2
Bolt : brass or steel

■ Rod To Tape Clamp



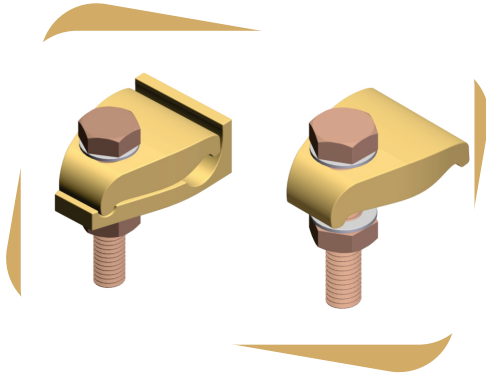
- Ground rod clamp are copper alloys used for joining to copper tapes these clamps are available to suit different sizes of earth rods and copper tapes ensure perfect fit and lasting connection and excellent resistance to corrosion

| Rod Dia | | Tape Size |
|---------|------|-----------|
| Inches | MM | mm |
| 1/2" | 12.7 | 26X12 |
| 5/8" | 16 | 26X12 |
| 3/4" | 20 | 26X10 |
| 5/8" | 16 | 30X2 |
| 3/4" | 20 | 30X2 |
| 5/8" | 16 | 40X12 |
| 5/8" | 16 | 51X8 |
| 3/4" | 20 | 51X12 |
| 1/2" | 12.7 | 26X20 |
| 5/8" | 16 | 26X18 |
| 3/4" | 20 | 26X10 |
| 1" | 25 | 26X10 |

Material : copper alloys, ASM C83600,BS EN 1982,LG-2
Bolt : brass or steel

■ LPS (Lighting & Protection System)

■ Tower Earth Clamp



- Tower clamp are copper alloy and are designed for bonding copper conductor to metal surfaces.

| Cable-wire | Channel Thickness |
|------------|-------------------|
| 70 | 10mm |
| 120 | 10mm |

Material : copper alloys, ASM C83600,BS EN 1982,LG-2

Bolt : Brass or Steel Size : 10mm or 12mm

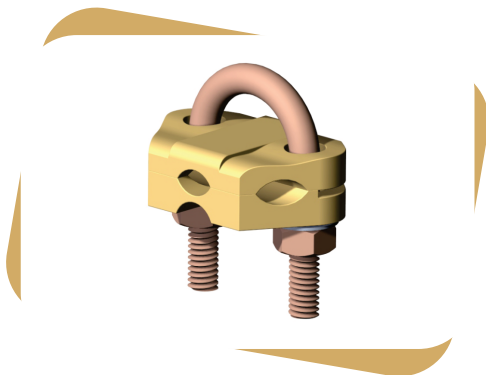
- Tower Tower clamp are copper alloy and are designed for bonding copper and aluminium conductors to steel structures.

| Cable-wire | Channel Thickness |
|------------|-------------------|
| 8mm | 10mm |

Material : copper alloys, ASM C83600,BS EN 1982,LG-2

Bolt : Brass or Steel Size : 10mm or 12mm

■ Rod To Cable Clamp

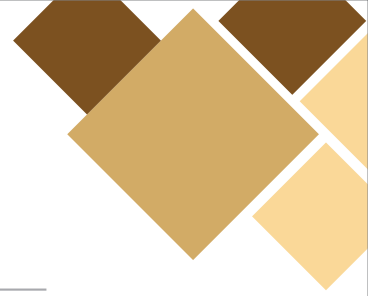


- Rod to cable clamp are copper alloy Double plated Clamps are Suitable for connecting earth rod with cable and round conductors.

| Rod Dia | Cable-wire |
|---------|------------------------|
| 5/8" | 16-95mm ² |
| 3/4" | 16-70mm ² |
| 5/8" | 70-185mm ² |
| 3/4" | 70-150mm ² |
| 5/8" | 150-300mm ² |
| 3/4" | 150-300mm ² |

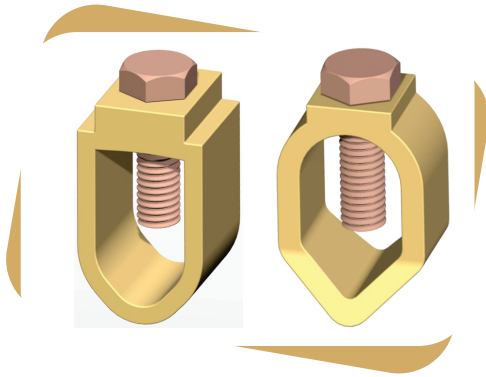
Material : copper alloys, ASM C83600,BS EN 1982,LG-2

U-Bolt : Copper And Brass



■ LPS (Lighting & Protection System)

■ Rod To Cable Clamp

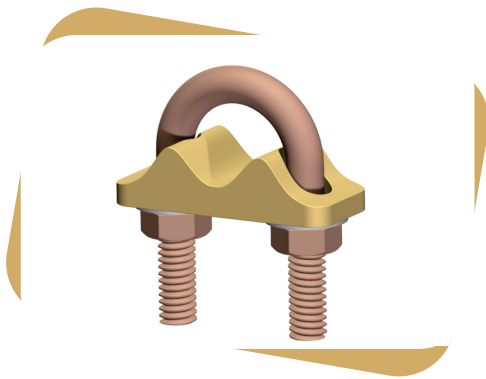


- Rod to cable clamp are copper alloy. These clamps are used for joining earth rods to copper cables with excellent resistance to corrosion.

| Rod dia | cable-wire |
|---------|-----------------------|
| 3/8" | 6-35mm ² |
| 1/2" | 16-50mm ² |
| 5/8" | 16-70mm ² |
| 3/4" | 35-95mm ² |
| 1" | 70-120mm ² |

Material : copper alloys, ASM C83600, BS EN 1982, LG-2
Bolt : Brass or Steel

■ E-Clamp



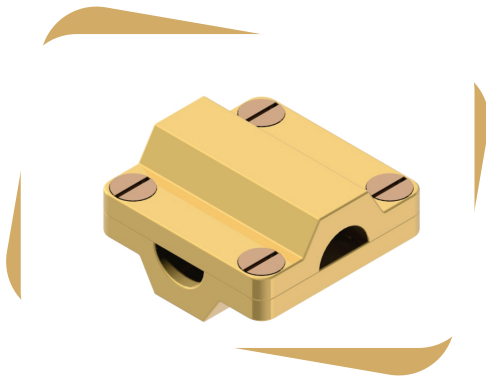
- U-bolt rod clamp are copper alloy base, These clamps are used to connect tape to the earth rod available in signal plate and dabble plate. Application being the same but suitable for fixing in different angles.

| Rod dia | tape Size |
|---------------|-----------|
| Inches | |
| 5/8" | 25x3 |
| 3/4" | 25x3 |
| 1" | 25x3 |
| 5/8" | 25x3 |

Material : copper alloys, ASM C83600, BS EN 1982, LG-2
U-Bolt : Copper And Brass

■ LPS (Lighting & Protection System)

■ Square Conductor

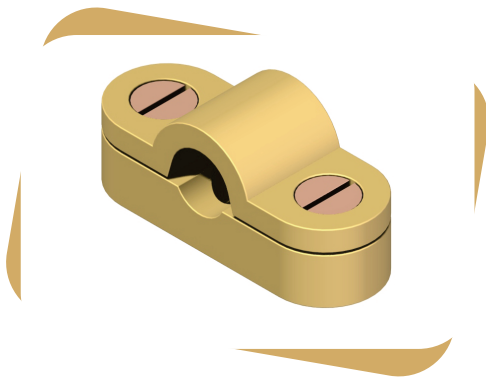


- Square conductor clamp are copper alloy for four way connectors are suitable for crossing over cable making straight through joint or these connections conductor.

| cable-wire |
|--------------------|
| 50 mm ² |
| 70 mm ² |
| 95 mm ² |

Material : copper alloys, ASM C83600,BS EN 1982,LG-2
Bolt : Brass or Steel

■ Conductor Saddle

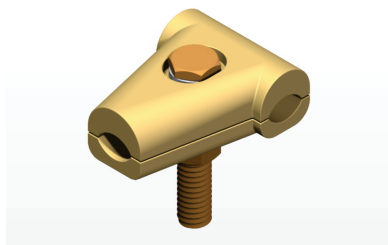


- Cast of high-strength copper alloy
- Support for Air Rod & Cable

| CONDUCTOR SIZE |
|--------------------|
| 35 mm ² |
| 50 mm ² |
| 70 mm ² |
| 95 mm ² |

■ LPS (Lighting & Protection System)

■ Tee Clamp



- Tee Clamp are copper alloys designed for Tee joints.

| Cable-wire |
|------------------------|
| 50-70 mm ² |
| 95-120 mm ² |

Material : copper alloys, ASM C83600,BS EN 1982,LG-2
Bolt : Brass or Steel

■ Rod Brackets



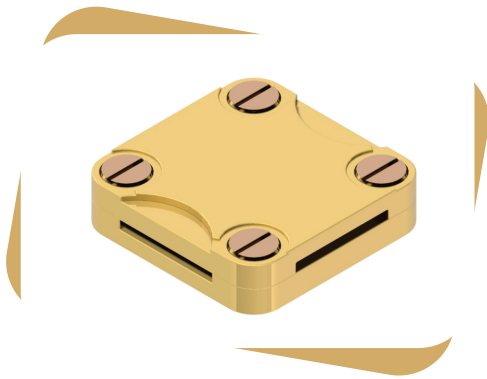
- Rod brackets are copper alloy,These are being used for providing projection from the building wall or face. Rod brackets are mainly used with rod to tape coupling where it is not possible to fit a saddle on the roof and the air rod has to be fitted on the side of the building.

| Rod Size |
|----------|
| 15mm Dia |

Material : copper alloys, ASM C83600,BS EN 1982,LG-2

■ LPS (Lighting & Protection System)

■ Square Tape Clamp

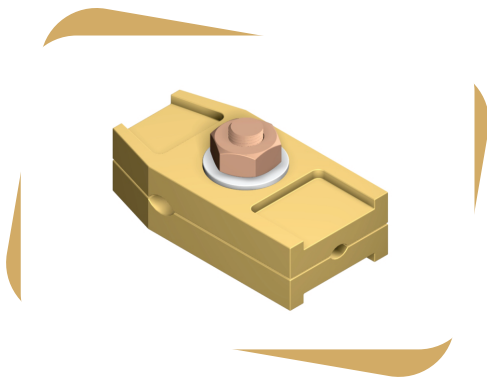


- Cast Square tape clamp support are copper or Aluminium alloys are suitable for four way crossing connection and is secured by four screw

| Tape size (mm) |
|-------------------|
| 25x3 |
| 25x4 |
| 25x6 |
| 38x3 |
| 38x6 |
| 50x3 |
| 50x6 |

Material : copper alloys, ASM C83600,BS EN 1982,LG-2
Bolt : Brass or Steel

■ Junction Clamp



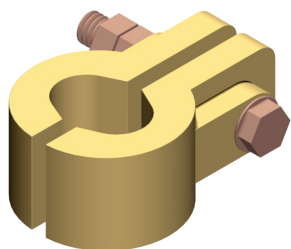
- Junction clamp are copper alloy, these clamps for forming straight through joints or for disconnection and test purpose.
- Also available for connecting 8mm diameter conductor to 25 x 3mm tape.

| Cable and Tape Size | Wt/Kg. |
|--------------------------------|--------|
| 35-50mm ² - 25 x3mm | 0.200 |
| 70mm ² - 25 x 3mm | 0.200 |
| 95mm ² - 25 x 3 mm | 0.200 |

Material : copper alloys, ASM C83600,BS EN 1982,LG-2
Bolt : Brass or Steel

■ LPS (Lighting & Protection System)

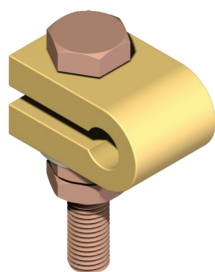
■ B-Bond Clamp



- Cast of high-strength copper alloy
- Used for Connect cable to Earth Rod

| ROD DIA. |
|---------------|
| 3/8" - 9.5 mm |
| 5/8" - 16 mm |
| 3/4" - 20mm |

■ Split Connector



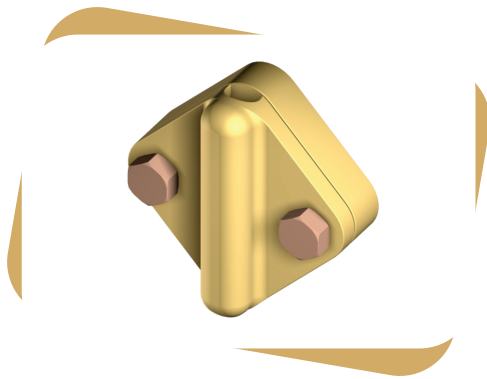
- Split clamp are copper alloy used with threaded and unthreaded rods, suitable for connecting earth rod with cable lugs.

| Rod dia |
|--------------|
| 3/8" - 9.5mm |
| 5/8" - 14mm |
| 5/8" - 16mm |
| 3/4" - 20mm |

Material : copper alloys, ASM C83600,BS EN 1982,LG-2
Bolt : Brass or Steel Size : 12mm

■ LPS (Lighting & Protection System)

■ Test Clamp

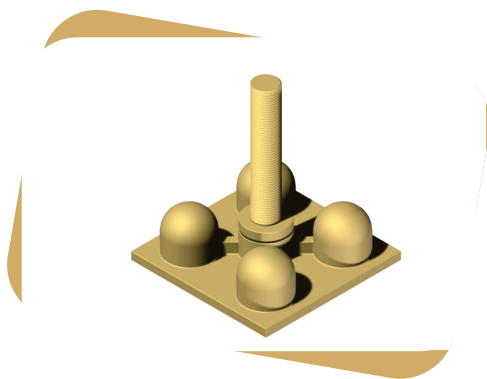


- Cast Test clamp are copper alloy, these clamps are suitable for end to end joints.

| Cable-Wire Size |
|-------------------|
| 50mm ² |
| 70mm ² |
| 95mm ² |

Material : copper alloys, ASM C83600,BS EN 1982,LG-2
Bolt : Brass or Steel

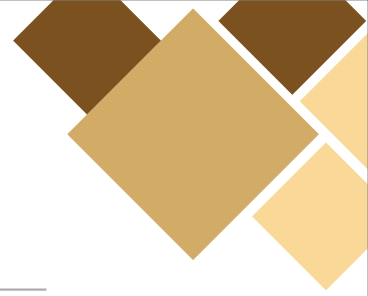
■ Earth Point



- Earth point are copper alloy, For providing earthing continuity and a multiple bonding point, and are available with one,two and four hole connection.

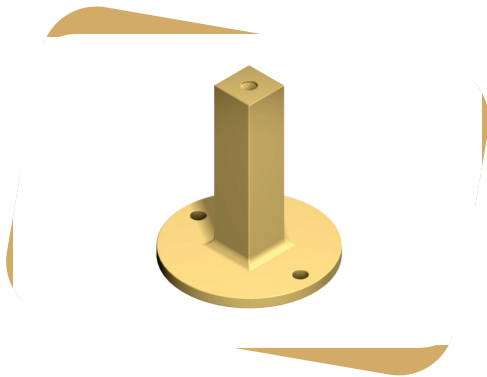
| Frant Plate Tape-wire | No of Hole |
|-------------------------------|------------|
| No Frant Plate | 4 |
| 25 x 3mm or 70mm ² | 2 |
| 25 x 3mm or 8mm dia | 2 |
| No Frant Plate | 2 |

Material : copper alloys, ASM C83600,BS EN 1982,LG-2
Bolt : Brass or Steel



■ LPS (Lighting & Protection System)

■ Back Plate Hole Fast

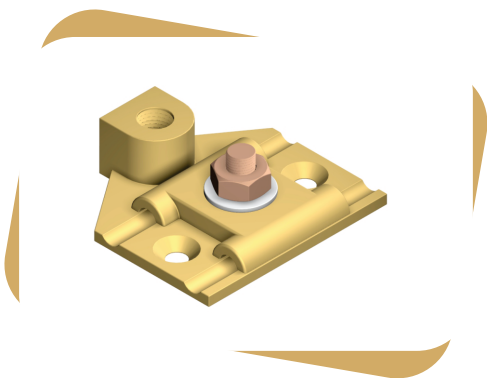


- Back Plate Holdfast Stem are copper alloy, These used with an appropriate DC Clip is to be secured away from the face of wall.

| Stem Height |
|-------------|
| 75mm |

Material : copper alloys, ASM C83600, BS EN 1982, LG-2
Screw : Brass M6

■ Air Rod Base



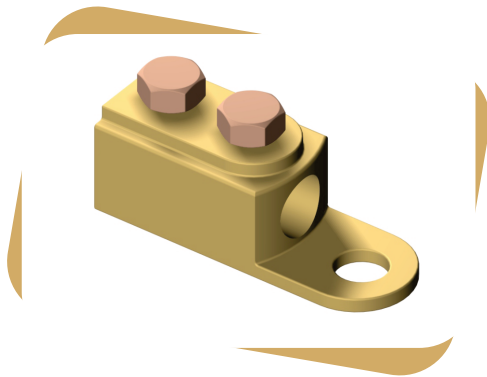
- Air terminal rod base are copper alloy, these used for mounting of air rods either horizontally or vertically.

| Rod Size |
|----------|
| 8mm |

Material : copper alloys, ASM C83600, BS EN 1982, LG-2
Bolt : Brass or Steel

■ LPS (Lighting & Protection System)

■ Straight Cable Socket

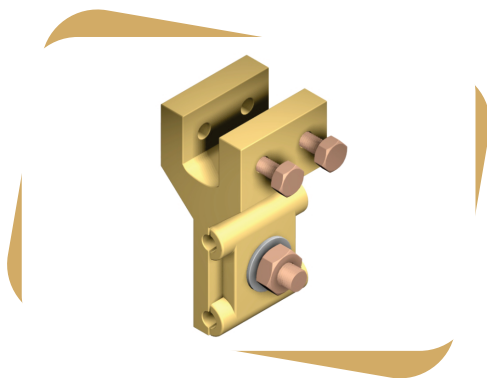


- Cable Socket are copper alloy, These socket are used for bonding copper and aluminium cable and conductor to steel work.

| Cable-Wire dia | Palm hole |
|----------------|-----------|
| 8mm | 12mm |

Material : copper alloys, ASM C83600,BS EN 1982,LG-2
Bolt : Brass or Steel

■ Metalwork Bond



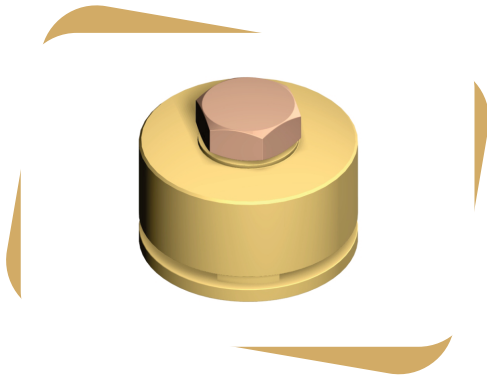
- CastMetalwork bond are copper alloy, These clamps are used to fixed conductor on the tower structure, H-Beam structure or angle iron of the lightning protection systems.

| Cable-Wire dia | Beam thick |
|----------------|------------|
| 8mm | 13mm Max. |

Material : copper alloys, ASM C83600,BS EN 1982,LG-2
Bolt : Brass or Steel

■ LPS (Lighting & Protection System)

■ Screw Down Test Clamp

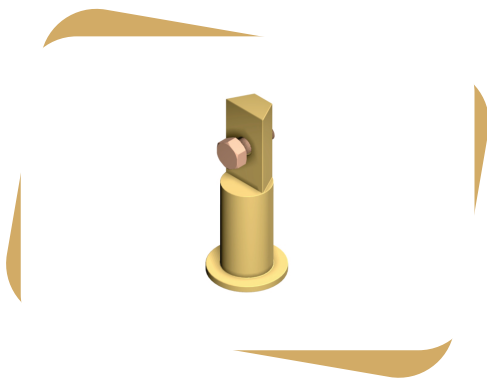


- Screw down clamp are copper alloy base. These clamps are provide easy access to copper tape conductors for inspection or testing.

| Tape Size |
|-----------|
| MM |
| 26x8 |

Material : copper alloys, ASM C83600,BS EN 1982,LG-2

■ Rod To Tape Coupling



- Cast Rod to tape coupling are copper alloy, Used in conjunction with the air rod brackets to connect the air rod and tapes. The coupling is screwd onto the air rod and then connects to the tape with the bolts.

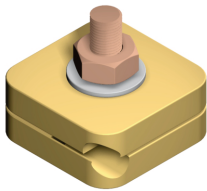
| Rod Dia |
|---------|
| 5/8" |
| 3/4" |

Material : copper alloys, ASM C83600,BS EN 1982,LG-2

Bolt : Brass or Steel

■ LPS (Lighting & Protection System)

■ Square Clamp

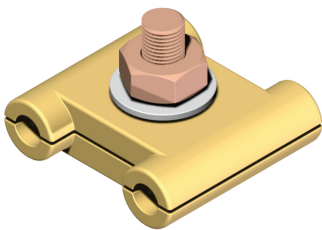


- Square clamps are copper alloy, These clamps are used for forming cross or tee joints.

| |
|-----------------------|
| Cable-Wire dia |
| 8mm |

Material : copper alloys, ASM C83600,BS EN 1982,LG-2
Bolt : Brass or Steel

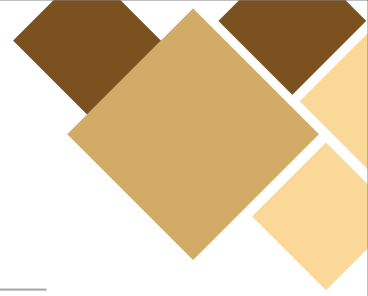
■ Jointing Clamp



- Jointing clamps are copper alloy, These clamps are used for forming straight through two cable or rod joints.

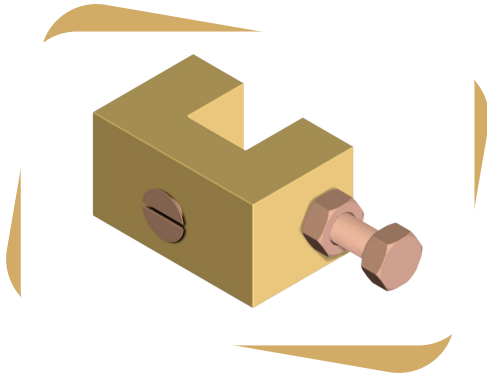
| Cable-wire-dia | Wt/Kg. |
|-----------------------|---------------|
| 8mm | 0.170 |

Material : copper alloys, ASM C83600,BS EN 1982,LG-2
Bolt : Brass or Steel



■ LPS (Lighting & Protection System)

■ Glazing Bar Holdfast



- Bar holdfast are copper alloy, These holdfasts can be used for attaching DC Clip etc.. Onto a narrow projection or extension such as angle steel structure.

| |
|--------------------|
| Maximum Bar |
| Width |
| 12mm |

Material : copper alloys, ASM C83600,BS EN 1982,LG-2
Bolt : Brass or Steel

■ Re-Bar Clamp



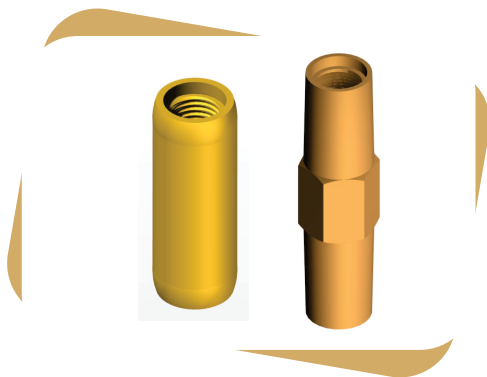
- Bar clamp are copper alloy, These clamps are used for bonding to handrails, re-inforcing bars, steem pipes etc..

| Cable-wire dia | Re-bar Dia |
|----------------|------------|
| 8mm | 8-18mm |
| 8mm | 8-38mm |

Material : copper alloys, ASM C83600,BS EN 1982,LG-2
Bolt : Brass or Steel

■ LPS (Lighting & Protection System)

■ Coupling

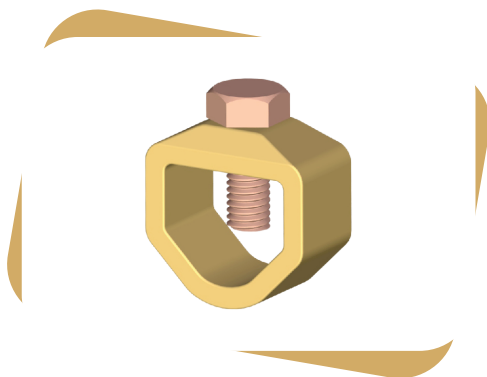


- Coupling are copper alloy made of high grade Silicon Bronze, Aluminium Bronze and Brass for high strength with counted bore for protecting the rod threads from damage. Also available ROUND & HEXAGON

| Rod Size |
|----------|
| 1/2" |
| 5/8" |
| 3/4" |

Material : copper alloys, ASM C83600, C95600,IS3091

■ Earth Rod to Tape Clamp



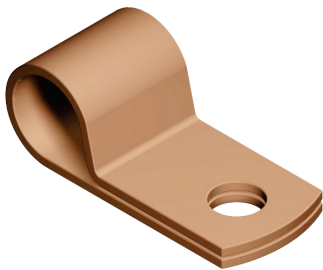
The Clamp are used joining to Ground Earth Rod and Copper Tapes ensure perfect fit and lasting connection and excellent resistance to corrosion.

| Rod Dia | | Tape Size |
|---------|----|-----------|
| Inches | MM | mm |
| 5/8" | 14 | 30x6 |
| 3/4" | 20 | 30 x6 |

- **Clamp** : Copper Alloy
- **Bolt** : Brass / Stainless Steel - M10

■ LPS (Lighting & Protection System)

■ One Hole Clip



- Cable Clip are copper sheet metal products and made of high grade Electrolytic Copper, These used for fixing cable connectors,

| Cable-Wire Size |
|--------------------|
| 25mm ² |
| 35mm ² |
| 50mm ² |
| 70mm ² |
| 95mm ² |
| 120mm ² |
| 150mm ² |
| 185mm ² |
| 240mm ² |
| 300mm ² |

Material : copper electrolytic, BS EN - 13601,C -101

■ Copper Tape Clip

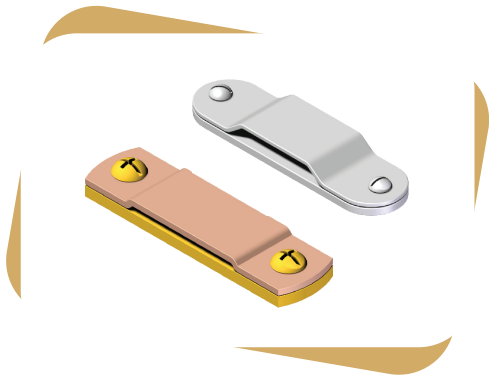


- Made from Copper

| CONDUCTOR SIZE |
|----------------|
| 25 x 3 mm |
| 38 x 3 mm |
| 50 x 3 mm |

■ LPS (Lighting & Protection System)

■ Tape Clip

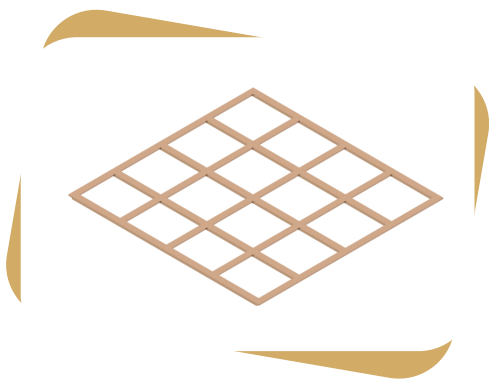


- Tape clip are used to hold the tape to the structure. These are fixed to the surface by using screws.

| Tape Size |
|-----------|
| 25 x 3 |
| 38 x 3 |
| 50 x 3 |
| 25 x 6 |
| 38 x 6 |
| 50 x 6 |

Material : Copper , Brass and Aluminium

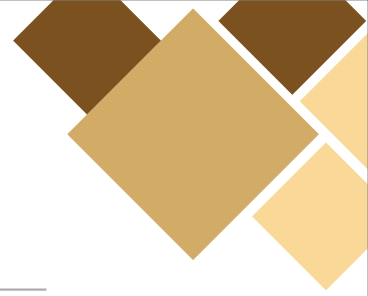
■ Lattice Copper Earth Plate



- Earth plates are used for mainly grounding area for purposed earthing protection. Earth Plates are made of high electrolytic Lattice copper earth plates.

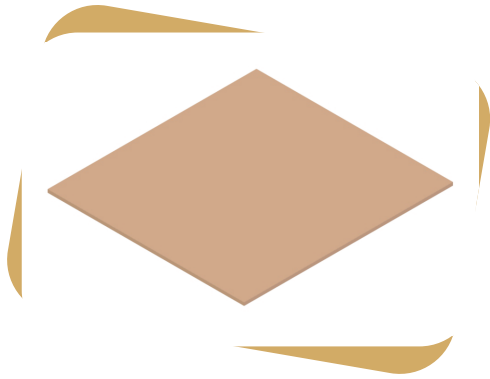
| Plate Size | Tape Size | No Of Strip |
|------------|-----------|-------------|
| 500x500 | - 25x2mm | 10 |
| 500x500 | - 25x3mm | 10 |
| 600x600 | - 25x2mm | 10 |
| 600x600 | - 25x3mm | 10 |
| 900x900 | - 25x2mm | 10 |
| 900x900 | - 25x3mm | 10 |

Material : Copper C101, BS EN 13601



■ LPS (Lighting & Protection System)

■ Solid Copper Earth Plate

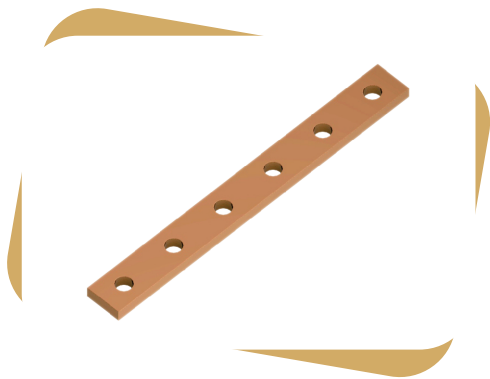


- Earth plates are used for mainly grounding area for purposed earthing protection. Earth Plates are made of high electrolytic solid copper sheets and also made copper bonded.

| Plate Size |
|-----------------------|
| 500mm x 500mm x 1.5mm |
| 500mm x 500mm x 3mm |
| 600mm x 600mm x 1.5mm |
| 600mm x 600mm x 3mm |
| 900mm x 900mm x 1.5mm |
| 900mm x 900mm x 3mm |

Material : Copper C101, BS 2874

■ Earth Bars For Housing



- Earth bar are copper sheet metal products and made of hard drawn copper are used for fitting into slots provided in the earth housings where multiple connection are required to the earth rod.

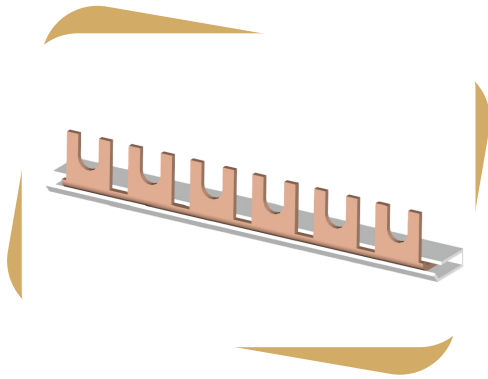
| Lenth x Weith x Tickness |
|--------------------------|
| 300mm x 31mm x 6mm |
| 300mm x 31mm x 5mm |
| 300mm x 31mm x 3mm |
| 250mm x 31mm x 6mm |
| 250mm x 31mm x 5mm |
| 250mm x 31mm x 3mm |
| 200mm x 25mm x 6mm |
| 200mm x 25mm x 5mm |
| 200mm x 25mm x3mm |

Material : copper electrolytic, BS EN - 13601,C -101

Note : Hole Size As per Customer's require.

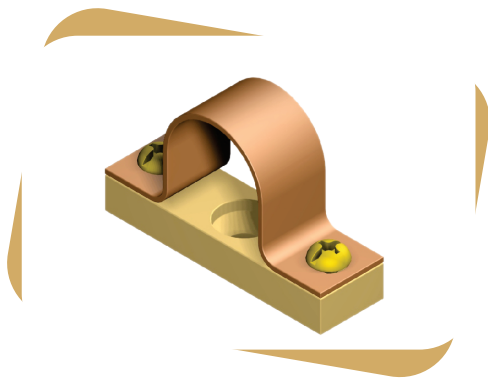
■ LPS (Lighting & Protection System)

■ Copper Bus Bar



- Made from High-Conductivity copper
- Available in Single pol, Two pol, Three pol
- Frock type & Pin type
- Length 1 meter


■ Pipe Clamp





- Made from High-Conductivity copper & Brass

| PIPE SIZE |
|-----------|
| 1/2" |
| 3/4" |
| 1" |
| 1 1/2" |



 Gokulnagar Main Road, Tirupati Industrial Area,
Opp. Fortune Hotel, 150 Feet Ring Road,
Rajkot - 360 004 (GUJARAT) INDIA.

 info@dhyeyindustries.com | dhyeyindustries@gmail.com
 www.dhyeyindustries.com